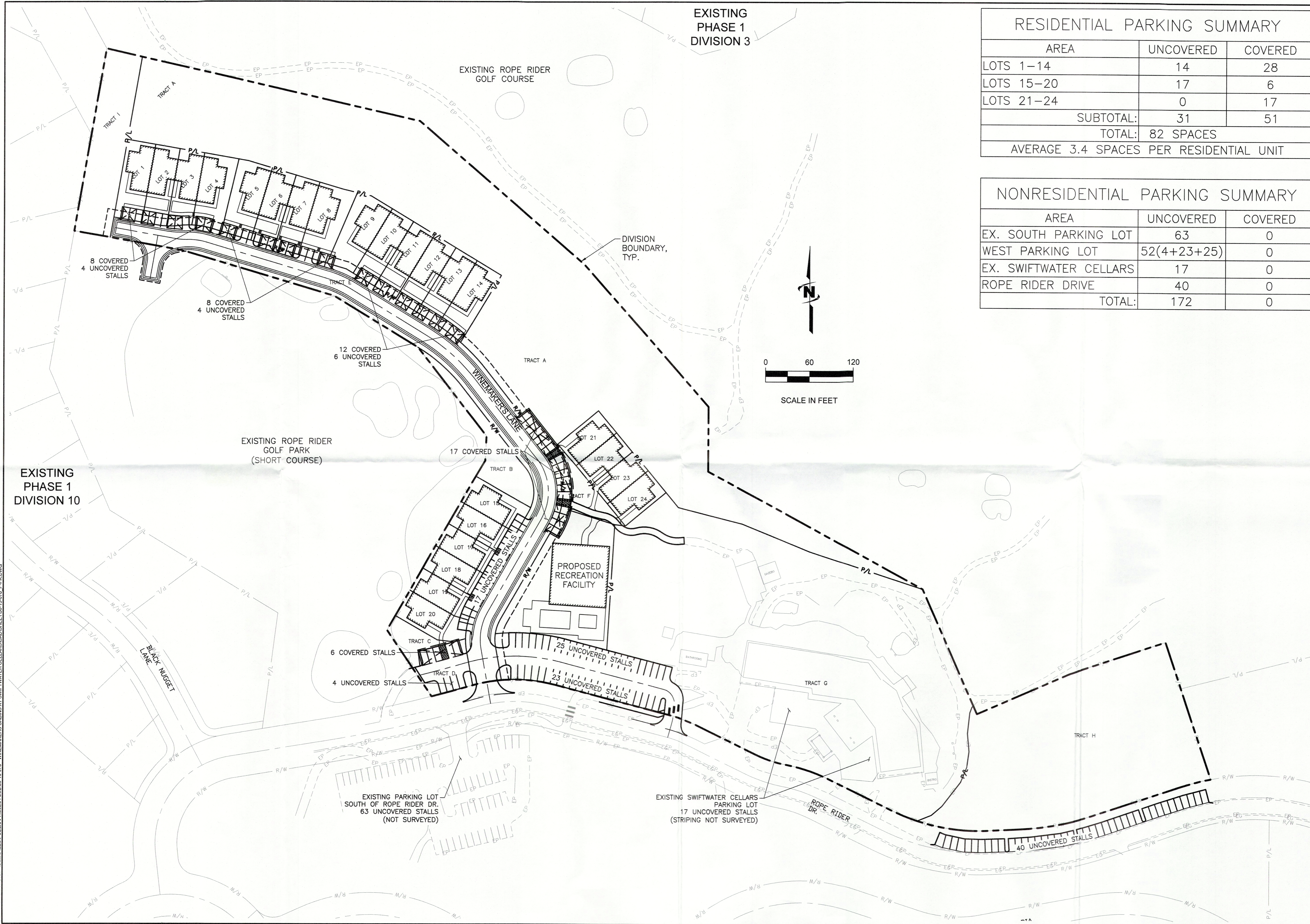


Plot Date: 8/15/2020 4:02 PM. Plotted By: Paul Howard
 Date Created: 8/15/2020 10:06:00 AM. Project: JUB30-15-078 - WINEMAKERS CABINS AT SWIFTWATER CELLARS. SHEET: 30-15-078-P-PK.DWG



EXISTING
 PHASE 1
 DIVISION 3

EXISTING ROPE RIDER
 GOLF COURSE

DIVISION
 BOUNDARY,
 TYP.

EXISTING ROPE RIDER
 GOLF PARK
 (SHORT COURSE)

PROPOSED
 RECREATION
 FACILITY

EXISTING
 PHASE 1
 DIVISION 10

EXISTING PARKING LOT
 SOUTH OF ROPE RIDER DR.
 63 UNCOVERED STALLS
 (NOT SURVEYED)

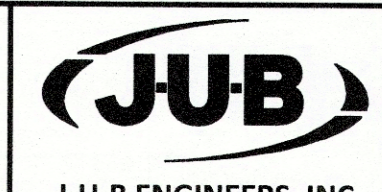
EXISTING SWIFTWATER CELLARS
 PARKING LOT
 17 UNCOVERED STALLS
 (STRIPING NOT SURVEYED)

RESIDENTIAL PARKING SUMMARY

AREA	UNCOVERED	COVERED
LOTS 1-14	14	28
LOTS 15-20	17	6
LOTS 21-24	0	17
SUBTOTAL:	31	51
TOTAL:	82 SPACES	
AVERAGE 3.4 SPACES PER RESIDENTIAL UNIT		

NONRESIDENTIAL PARKING SUMMARY

AREA	UNCOVERED	COVERED
EX. SOUTH PARKING LOT	63	0
WEST PARKING LOT	52(4+23+25)	0
EX. SWIFTWATER CELLARS	17	0
ROPE RIDER DRIVE	40	0
TOTAL:	172	0



J-U-B ENGINEERS, INC.

J-U-B ENGINEERS, INC.
 2810 W. Clearwater Ave.
 Suite 201
 Kennewick, WA 99336
 Phone: 509.783.2144
 Fax: 509.736.0790
 www.jub.com

PRELIMINARY
 PLANS

NOT FOR
 CONSTRUCTION

REUSE OF DRAWINGS
 J-U-B SHALL RETAIN ALL COMMON LAW, STATUTORY, COPYRIGHT, AND OTHER RESERVED RIGHTS OF THESE DRAWINGS AND THE SAME. ANY REUSE WITHOUT WRITTEN CONSENT BY J-U-B WILL BE AT CLIENTS SOLE RISK AND WITHOUT LIABILITY OR LEGAL EXPOSURE TO J-U-B.

NO.	DESCRIPTION	BY	DATE

WINEMAKERS CABINS AT SWIFTWATER CELLARS
 SUNCADIA, WA

PARKING EXHIBIT

FILE: 30-15-078-P-PK
 JUB PROJ #: 30-15-078
 DRAWN BY: PSI
 DESIGN BY: PSI
 CHECKED BY: VJL
 ONE INCH
 AT FULL SIZE, IF NOT ONE
 INCH, SCALE ACCORDINGLY.
 LAST UPDATED: 8/15/2020

SHEET NUMBER:
PK